

Self-Propelled Articulating Booms

Z™-34/22 IC

Specifications

| Models | Z-34/22 IC 2WD | | Z-34/22 IC 4WD | |
|-------------------------------|----------------|------------|----------------|-------------|
| Measurements | Metric | US | Metric | US |
| Working height maximum* | 12.52 m | 40 ft 6 in | 12.62 m | 40 ft 10 in |
| Platform height maximum | 10.52 m | 34 ft 6 in | 10.62 m | 34 ft 10 in |
| Horizontal reach maximum | 6.78 m | 22 ft 3 in | 6.78 m | 22 ft 3 in |
| Up and over clearance maximum | 4.57 m | 15 ft | 4.6 m | 15 ft 1 in |
| ▲ Platform length | 0.76 m | 2 ft 6 in | 0.76 m | 2 ft 6 in |
| ▲ Platform width | 1.42 m | 4 ft 8 in | 1.42 m | 4 ft 8 in |
| ▲ Height - stowed | 2.00 m | 6 ft 7 in | 2.06 m | 6 ft 9 in |
| ▲ Length - stowed | 5.64 m | 18 ft 6 in | 5.66 m | 18 ft 7 in |
| ▲ Storage height | 2.26 m | 7 ft 5 in | 2.29 m | 7 ft 6 in |
| ▲ Storage length | 4.08 m | 13 ft 5 in | 4.11 m | 13 ft 6 in |
| ▲ Width | 1.73 m | 5 ft 8 in | 1.85 m | 6 ft 1 in |
| ▲ Wheelbase | 1.88 m | 6 ft 2 in | 1.88 m | 6 ft 2 in |
| ▲ Ground clearance - center | 0.15 m | 6 in | 0.15 m | 6 in |

Productivity

| | | | | |
|--------------------------|---------------------|--------------|---------------------|--------------|
| Lift capacity | 227 kg | 500 lbs | 227 kg | 500 lbs |
| Platform rotation | 180° | 180° | 180° | 180° |
| Vertical jib rotation | 139° | 139° | 139° | 139° |
| Turntable rotation | 355° non-continuous | | 355° non-continuous | |
| Turntable tailswing | zero | zero | zero | zero |
| Drive speed - stowed | 6.4 km/h | 4.0 mph | 6.4 km/h | 4.0 mph |
| Drive speed - raised** | 1.1 km/h | 0.68 mph | 1.1 km/h | 0.68 mph |
| Gradeability - stowed*** | 35% | 35% | 35% | 35% |
| Turning radius - inside | 1.75 m | 5 ft 9 in | 1.80 m | 5 ft 11 in |
| Turning radius - outside | 4 m | 13 ft 1 in | 4.11 m | 13 ft 6 in |
| Controls | 12V DC | proportional | 12V DC | proportional |
| Tyres - foam filled | 23 x 37 cm | 9 x 14.5 in | 25.4 x 42 cm | 10 x 16.5 in |
| | | | rough terrain | |

Power

| | | | | |
|-------------------------|---|--------|--------|--------|
| Power source | Tier IV Kubota D-1105 3-cylinder diesel 26 hp (19.4 kW) | | | |
| | Tier IV Perkins 403 D11 3-cylinder diesel 26.4 hp (19.7 kW) | | | |
| Auxiliary power unit | 12V DC | 12V DC | 12V DC | 12V DC |
| Hydraulic tank capacity | 71.9 L | 19 gal | 71.9 L | 19 gal |
| Fuel tank capacity | 35.2 L | 9 gal | 35.2 L | 9 gal |

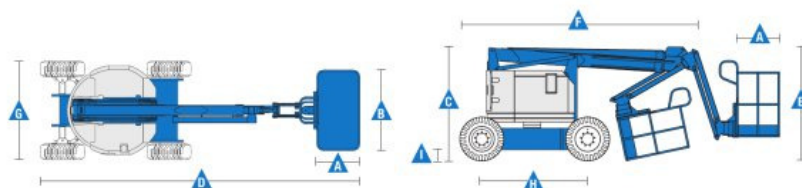
Sound & Vibration Levels

| | | | | |
|---|-----------------------|---------------------------|-----------------------|---------------------------|
| Sound pressure level (ground workstation) | <81 dBA | <81 dBA | <81 dBA | <81 dBA |
| Sound pressure level (platform workstation) | <80 dBA | <80 dBA | <80 dBA | <80 dBA |
| Vibration | <2.5 m/s ² | <8 ft 2 in/s ² | <2.5 m/s ² | <8 ft 2 in/s ² |

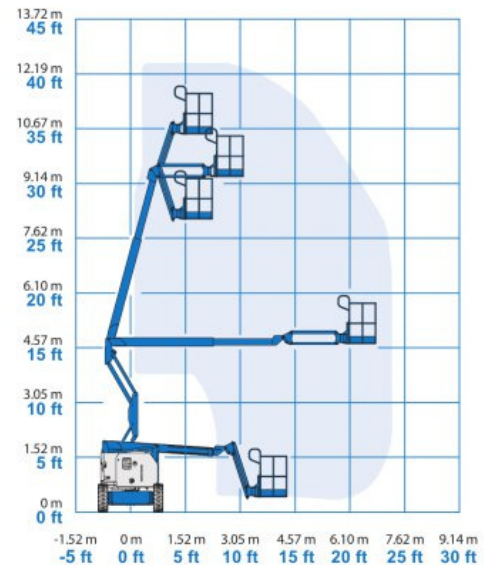
Weight****

| | | | | |
|------------------------------------|----------|------------|----------|------------|
| CE Industrial foam filled tyres | 4,793 kg | 10,566 lbs | N/A | N/A |
| CE rough terrain foam filled tyres | 4,892 kg | 10,786 lbs | 4,929 kg | 10,986 lbs |

Standards Compliance EU Directives: 2006/42/EC - Machinery (harmonized standard EN280:2001+A2:2009); 2004/108/EC (EMC); 2000/14/EC (Outdoor Noise)



Range Of Motion Z-34/22 IC



* The metric equivalent of working height adds 2 m to platform height. U.S. adds 6 ft to platform height.

** In lift mode (platform raised), the machine is designed to operate on firm, level surfaces only.

*** Gradeability applies to driving on slopes. See operator's manual for details regarding slope ratings.

**** Weight will vary depending on options and/or country standards.