

**PALFINGER**

**P 130 A LOW SMART**  
**RELIABILITY,**  
**SAFETY AND**  
**PERFORMANCE**  
**ON ANY TERRAIN**

LIFETIME EXCELLENCE



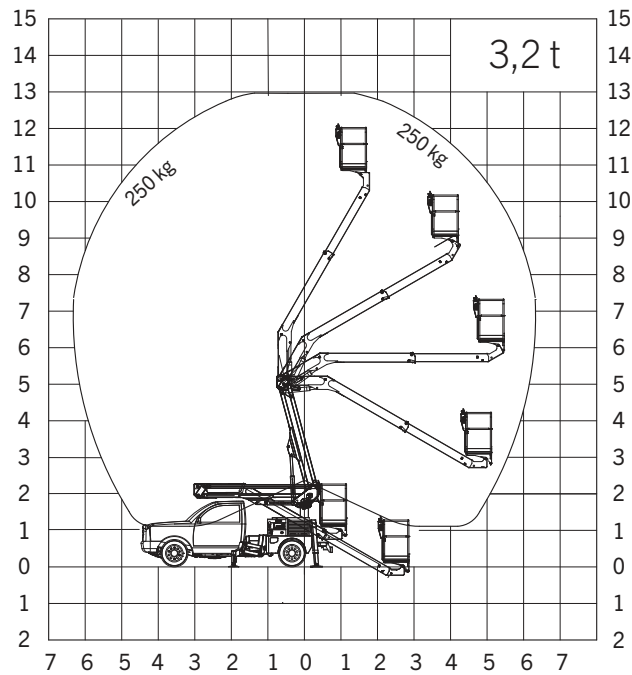
## TECHNICAL SPECIFICATIONS

|                                |                   |
|--------------------------------|-------------------|
| Maximum working height         | 13 m              |
| Maximum cage floor             | 11 m              |
| Maximum lateral outreach       | 6.3 m             |
| Angle of main boom             | -30° + 60°        |
| Turntable rotation             | 360°              |
| Basket capacity                | 250 kg            |
| Basket dimensions              | 1.4 x 0.7 x 1.1 m |
| Height in transport conditions | 2.37 m            |
| Width in transport conditions  | 1.88 m            |
| Length in transport conditions | 5.62 m            |
| GVW                            | 3200 kg           |

## OPTIONAL

|  |
|--|
| Toolbox with rolling shutter                   |
| Fiberglass basket                              |
| Emergency electropump connected to the battery |
| Adjustable 60 W headlamp on the basket         |
| Insulation 1000 V                              |
| Ladder to climb to the basket in stow position |
| Bordering                                      |
| Paint upon request by the client, aerial part  |

## WORKING DIAGRAMS



## DIMENSIONS



Units shown in the leaflet are partially optional equipped and do not always correspond to the standard version.  
Country-specific regulations must be observed.  
Dimensions may vary. Subject to technical changes, errors and translation mistakes.